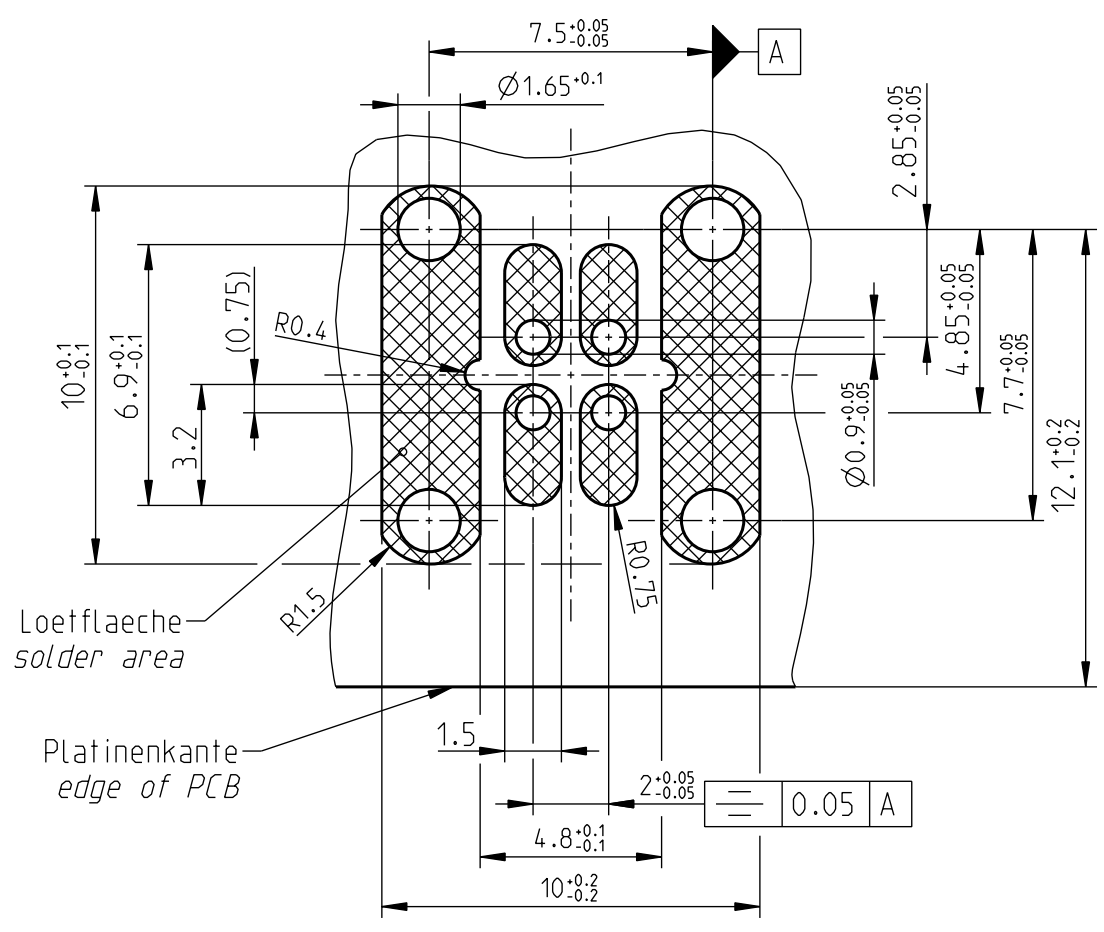


All rights strictly reserved. Reproduction or issue to third parties in any form whatever is not permitted without written authority from the proprietor. Property of Rosenberger Hochfrequenztechnik.

Montagebohrung  
panel piercing  
B 322



Loetflaeche  
solder area

Platinkante  
edge of PCB

fuer diese technische Unterlage behalten wir uns alle Rechte vor (DIN 34)

A wide variety of transmissionline topologies and pcb-parameters like permittivity, substrate thickness, and board-stackup are applied by customers. These parameters have a strong impact on the high frequency performance of the mounted connector. Please note, that the given layout is not optimised to fit all of the possible board configurations regarding RF-performance, it represents a recommendation for optimum solderability of the connector. In order to guarantee optimum high frequency properties of the connector, an RF-analysis of the connector to board transition is recommended.

Format: TCC\_FB\_05\_PC\_AA Einzelteil  
Date: 15.09.2011 10:58:00  
Version: 1.1

Dimensions  
in mm

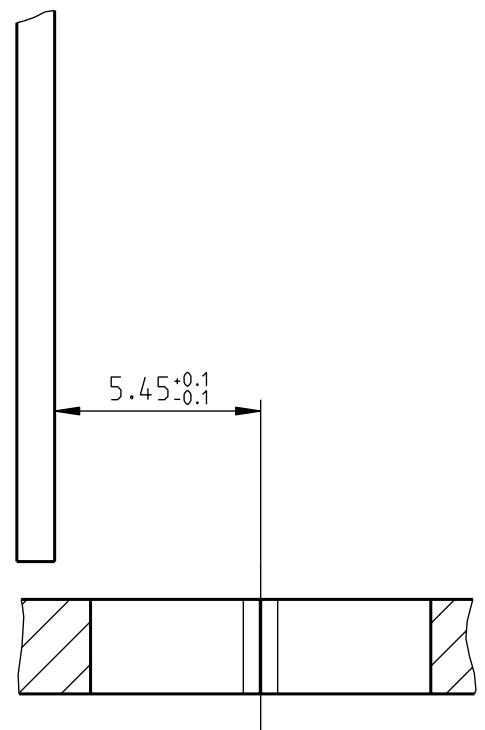
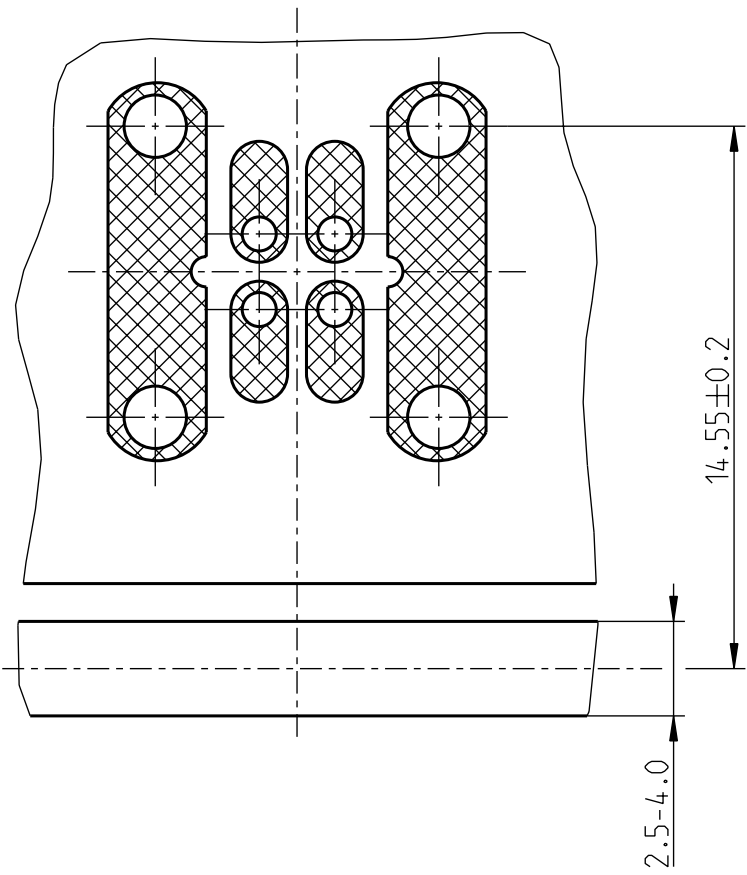
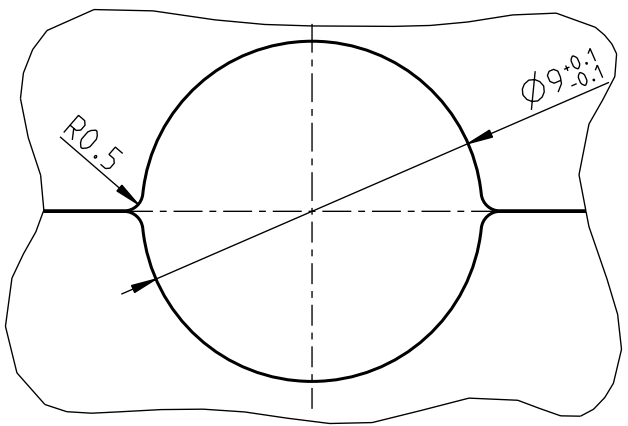


ISO-Projektion  
Methode E

<b>Rosenberger</b> Hochfrequenztechnik 84526 Tittmoning Pro/ENGINEER		general tolerance ISO 2768 RN 006-01 m-H dimensions <0,5 and symmetry		scale: 5:1 ( )	weight(g):5.478 surface(mm²):1170.2
		material:			
		date name drawn 11.02.2009 M_Singhammer check 26.03.2012 M_Singhammer appr. 04.04.2012 R_Bippus		title: <h2 style="text-align: center;">Montagebohrung panel piercing</h2>	
		dimensioning incl. finish			
b00	12-0262	A_Kott	04.04.2012	drawing-no.: MB_322	
a00	09-0095	M_Singhammer	11.02.2009		
rev. change-no name date		distribu- tion to: FE AZ QSM RMT . X . . . .		sheet: 1 of: 2	
remarks: .					

All rights strictly reserved. Reproduction or issue to third parties in any form whatever is not permitted without written authority from the proprietor. Property of Rosenberger Hochfrequenztechnik.

Montageloch  
panel mounting hole



fuer diese technische Unterlage behalten wir uns alle Rechte vor (DIN 34)

Format: TC\_FB\_05\_PE\_AA Einzelteil  
Pfad: \\sve.com\lvs\magn  
Datei: 84526\_1\_030710m  
Version: 1.2

Dimensions  
in mm

ISO-Projektion  
Methode E

<b>Rosenberger</b>			general tolerance		scale: 5:1 ( )	weight(g): 5.478	
Hochfrequenztechnik 84526 Tittmoning Pro/ENGINEER			ISO 2768	RN 006-01	material:		
			m-H	dimensions <0,5 and symmetry			
			date	name	title:		
			drawn	11.02.2009 M_Singhammer	<b>Montagebohrung panel piercing</b>		
			check	26.03.2012 M_Singhammer			
			appr.	04.04.2012 R_Bippus			
			dimensioning incl. finish			drawing-no...: MB_322	
b00	12-0262	A_Kott	04.04.2012				sheet: 2
a00	09-0095	M_Singhammer	11.02.2009	distribu- tion to:	FE	AZ	QSM
rev. change-no			name	date	X	.	.
					.	.	of: 2
					.	.	remarks: .