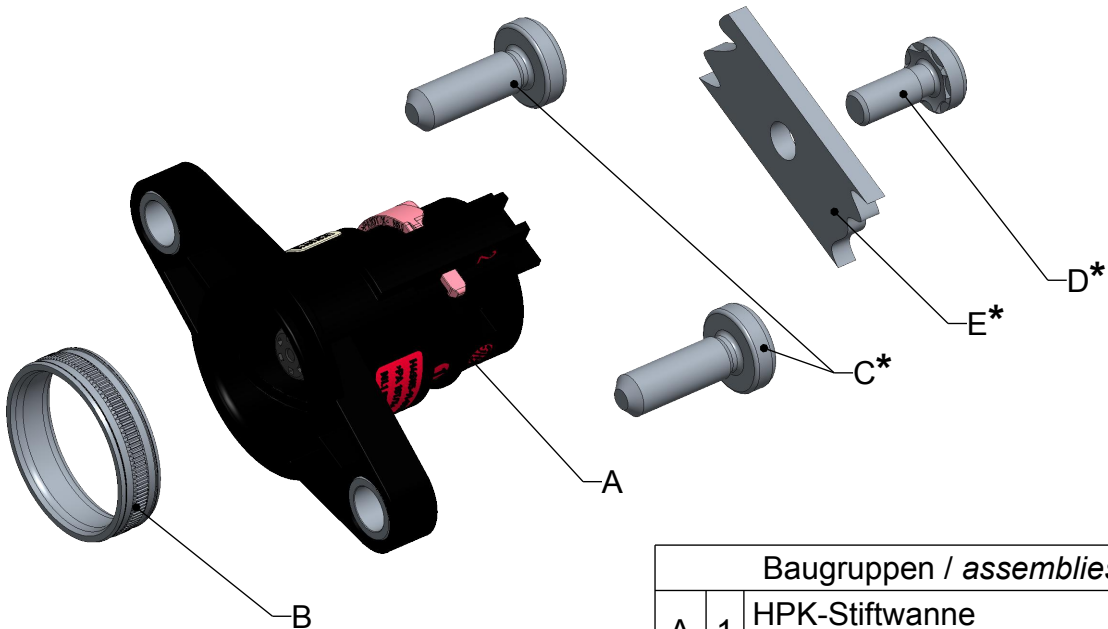


# Gesamtbaugruppe assembly

**VORSERIE  
PRE-SERIES**



# Einzel-Baugruppen subassembly overview



Baugruppen / assemblies	
A	1 HPK-Stiftwanne HPK pin housing
Einzelteile / single parts	
B	1 Einpresshülse press in sleeve
C*	2 Schraube - screw
D*	1 Schraube - screw
E*	1 Stromschiene - bus bar

\* gehört nicht zum Lieferumfang  
*is not included*  
Schrauben "C" und "D" nach Wahl des Kunden  
Screws "C" and "D" according to customer's choice

Farbdarstellung muss nicht den Bauteilen entsprechen.  
*Colours are not necessarily corresponding with parts.*

**Rosenberger**

general tolerance  
ISO 2768  
mH

assembly instr.:  
---  
panel piercing:  
---

scale: 1:1 ( )  
series: HPK  
RN\_084-01

crimp insert: ---  
cable: ---  
---

**vertraulich / confidential**

	date	name
drawn	23.08.2017	R_Hochheim
check.	25.08.2017	S_Gruendler
appr.	30.08.2017	J_Gottanka

title:  
**Montageanleitung  
assembly instruction**

drawing-no.:  
MA\_HV0039

sheet:  
1  
of: 5

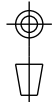
rev.	change-no	name	date
100	17-v303	R_Hochheim	23.08.2017

remarks: .

© ROSENBERGER HOCHFREQUENZTECHNIK GMBH & Co. KG  
The reproduction, distribution and utilization of this document as well as the communication of its contents to others without express authorization is prohibited. Offenders will be held liable for the payment of damages. All rights reserved in the event of the grant of patent, utility model or design.

PD\_FB\_01

-METRIC-



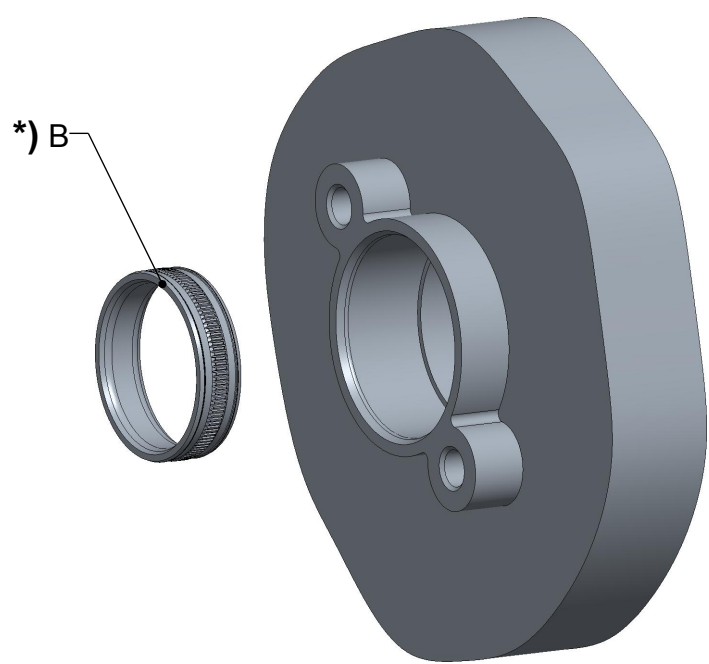
ISO-Projektion  
Methode 1

© ROSENBERGER HOCHFREQUENZTECHNIK GMBH & Co. KG  
 The reproduction, distribution and utilization of this document as well as the communication of its contents to others without express authorization is prohibited. Offenders will be held liable for the payment of damages. All rights reserved in the event of the grant of patent, utility model or design.

**VORSERIE  
 PRE-SERIES**

**1)**

\*) Einpressbuchsen "B": Lieferumfang optional (siehe RN\_084-03).  
 press in sleeves "B": delivery contents optional (see RN\_084-03).



Einpressbuchsen "B" auf Maß in Aluminium einpressen.  
 Einpressmaße: siehe RN\_084-03  
 Einpresskraft: siehe RN\_084-03  
 press the press in sleeves "B" in aluminum to the specefied position.  
 press in measure: acc. to RN\_084-03  
 press in force: acc. to RN\_084-03

<b>Rosenberger</b>		general tolerance		assembly instr.: ---		scale: 1:1 ( )		crimp insert: ---	
		ISO 2768 mH		panel piercing: ---		series: HPK RN_084-01		cable: ---	
<b>vertraulich / confidential</b>				date		name		title: <b>Montageanleitung                  assembly instruction</b>	
		drawn	23.08.2017	R_Hochheim					
		check.	25.08.2017	S_Gruendler					
		appr.	30.08.2017	J_Gottanka					
drawing-no.: MA_HV0039						sheet: 2		F	
rev. change-no name date						of: 5			
remarks: .									

PD\_FB\_01

-METRIC-

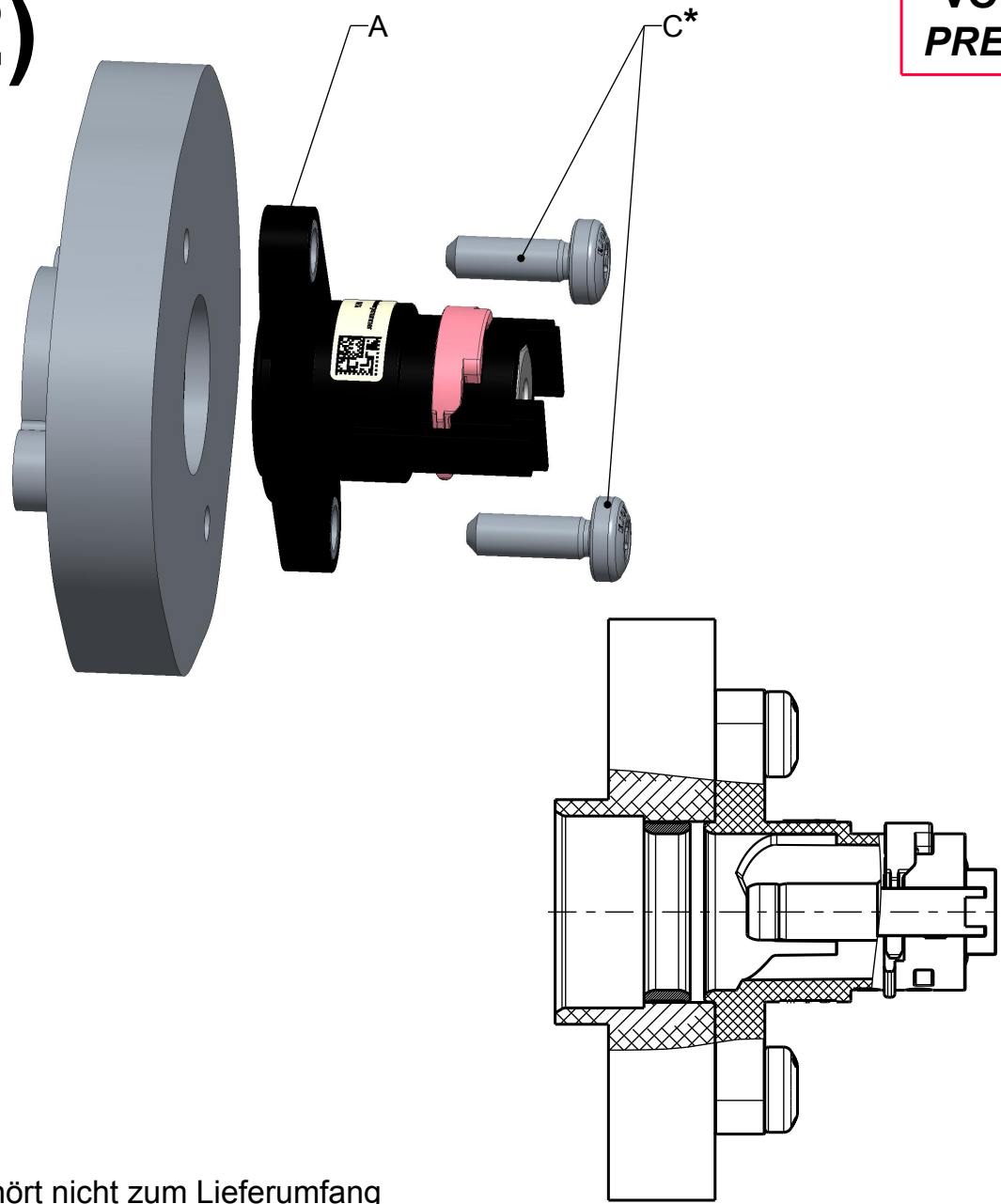


ISO-Projektion  
 Methode 1

© ROSENBERGER HOCHFREQUENZTECHNIK GMBH & Co. KG  
 The reproduction, distribution and utilization of this document as well as the communication of its contents to others without express authorization is prohibited. Offenders will be held liable for the payment of damages. All rights reserved in the event of the grant of patent, utility model or design.

**VORSERIE  
 PRE-SERIES**

**2)**



\* gehört nicht zum Lieferumfang  
*is not included*  
 Schrauben "C" nach Wahl des Kunden  
*Screws "C" according to customer's choice*

HPK-Stiftwanne "A" anhand der beiden Bohrungen am Aluminium ausrichten.  
 Ausgerichtete HPK-Stiftwanne "A" mit 2 Schrauben "C" verschrauben.  
 Einbaumaße siehe RN\_084-01 und RN\_084-03  
*Orientate the HPK pin housing "A" on the aluminum with the two holes.  
 Screw orientate housing assembly "A" with the 2 screws "C".  
 assembly dimensions acc. to RN\_084-01 and RN\_084-03*

<b>Rosenberger</b>		general tolerance		assembly instr.: ---		scale: 1:1 ( )		crimp insert: ---	
		ISO 2768 mH		panel piercing: ---		series: HPK RN_084-01		cable: ---	
<b>vertraulich / confidential</b>				date		name		<b>Montageanleitung    assembly instruction</b>	
				drawn	23.08.2017	R_Hochheim			
				check.	25.08.2017	S_Gruendler			
				appr.	30.08.2017	J_Gottanka			
drawing-no.: MA_HV0039						sheet: 3			
rev. change-no						of: 5			
name						remarks: .			
date									

PD\_FB\_01  
 -METRIC-  
 ISO-Projektion Methode 1

© ROSENBERGER HOCHFREQUENZTECHNIK GMBH & Co. KG  
 The reproduction, distribution and utilization of this document as well as the communication of its contents to others without express authorization is prohibited. Offenders will be held liable for the payment of damages. All rights reserved in the event of the grant of patent, utility model or design.

1 2 3 4

A

B

C

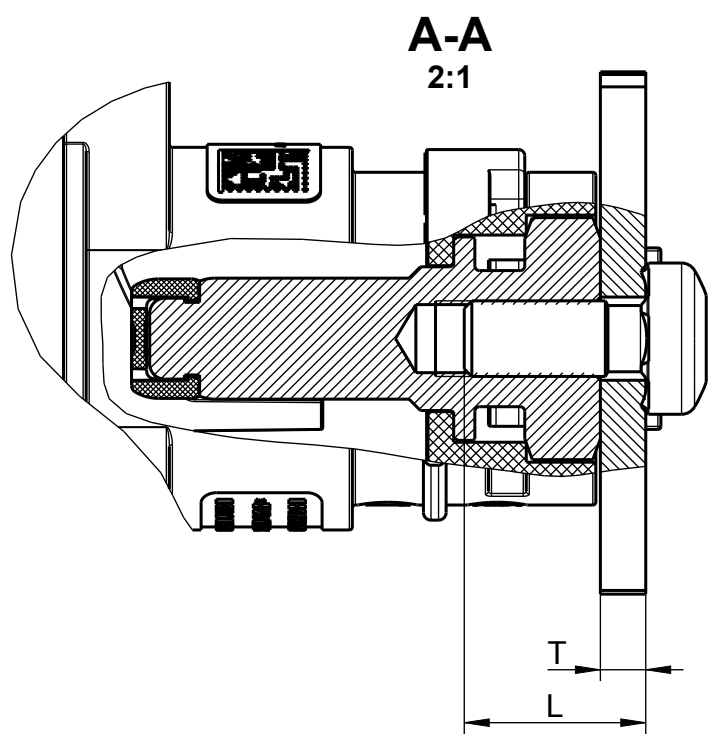
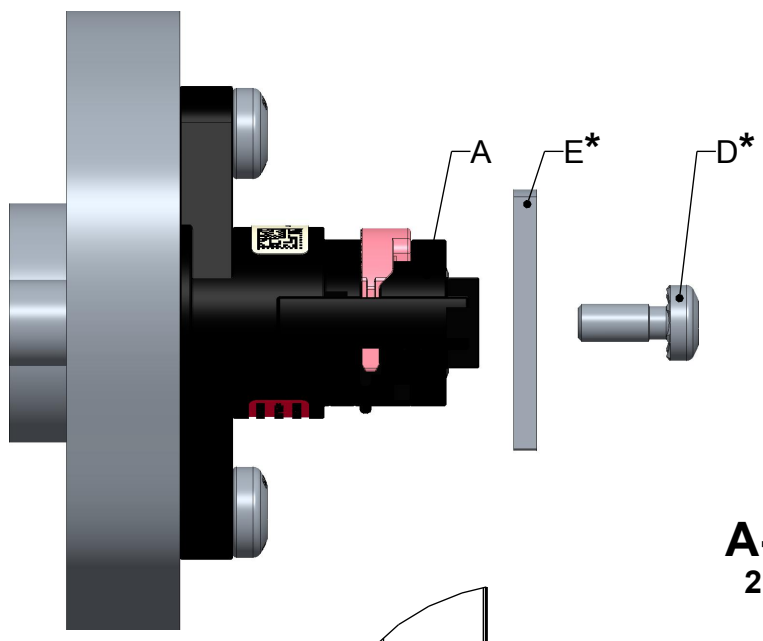
D

E

F

**VORSERIE  
PRE-SERIES**

**3)**



\* gehört nicht zum Lieferumfang  
*is not included*  
 Schraube "D" nach Wahl des Kunden  
*Screw "D" according to customer's choice*

Stromschie einlegen und mit Schraube "D" an Kontaktpin von HPK-Stiftwanne "A" verschrauben.  
*Bus bar engaged and screwed with screw "D" into contact pin of HPK pin housing "A".*

Blechdicke T <i>sheet thickness T</i>	1-2mm	2-3 mm	3-4mm	4-5mm
empfohlene Schraubenlänge L <i>recommended screw length L</i>	8mm	10mm	12mm	14mm

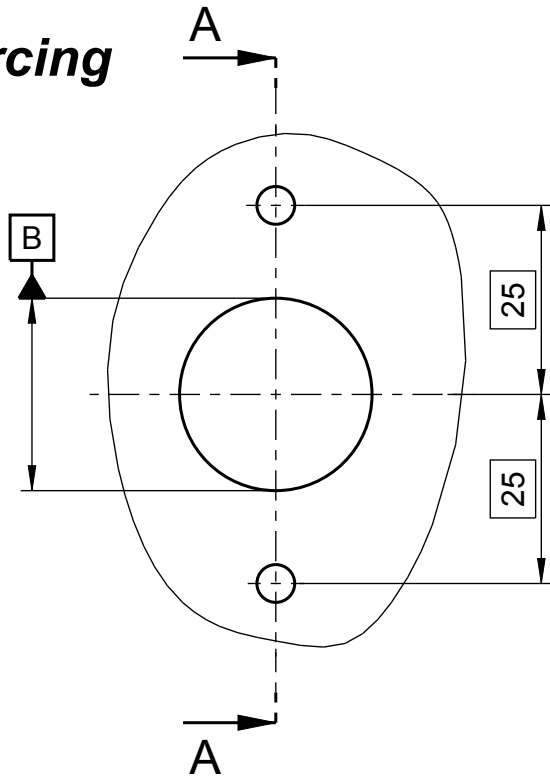
<b>Rosenberger</b>		general tolerance		assembly instr.: ---		scale: 1:1 ( )		crimp insert: ---	
		ISO 2768 mH		panel piercing: ---		series: HPK RN_084-01		cable: ---	
<b>vertraulich / confidential</b>				date		name		<b>Montageanleitung assembly instruction</b>	
				drawn	23.08.2017	R_Hochheim			
				check.	25.08.2017	S_Gruendler			
				appr.	30.08.2017	J_Gottanka			
drawing-no.: MA_HV0039						sheet: 4			
rev. change-no name date						of: 5			
remarks: .									

PD\_FB\_01  
-METRIC-  
ISO-Projektion Methode 1

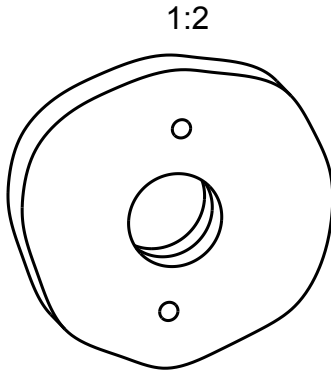
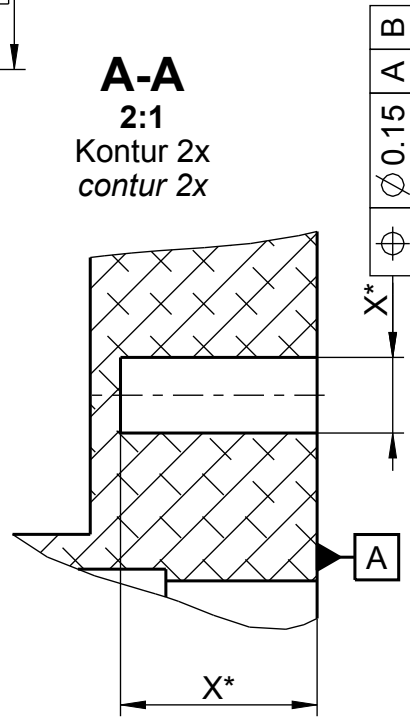
1 2 3 4

# Bohrbild panel piercing

**VORSERIE  
PRE-SERIES**



**A-A**  
2:1  
Kontur 2x  
contur 2x



**X\*** nach Wahl des Kunden  
according to customer's choice  
abhängig von verwendeter Schraube  
dependent on used screw

**Rosenberger**

general tolerance  
ISO 2768  
mH

assembly instr.:  
---  
panel piercing:  
---

scale: 1:1 ( )  
series: HPK  
RN\_084-01

crimp insert: ---  
cable: ---  
---

**vertraulich / confidential**

	date	name
drawn	23.08.2017	R_Hochheim
check.	25.08.2017	S_Gruendler
appr.	30.08.2017	J_Gottanka

title:  
**Montageanleitung  
assembly instruction**

drawing-no.:  
MA\_HV0039

sheet:  
5  
of: 5

remarks: .

rev.	change-no	name	date
100	17-v303	R_Hochheim	23.08.2017

1

2

3

4