

Assembly Instruction:

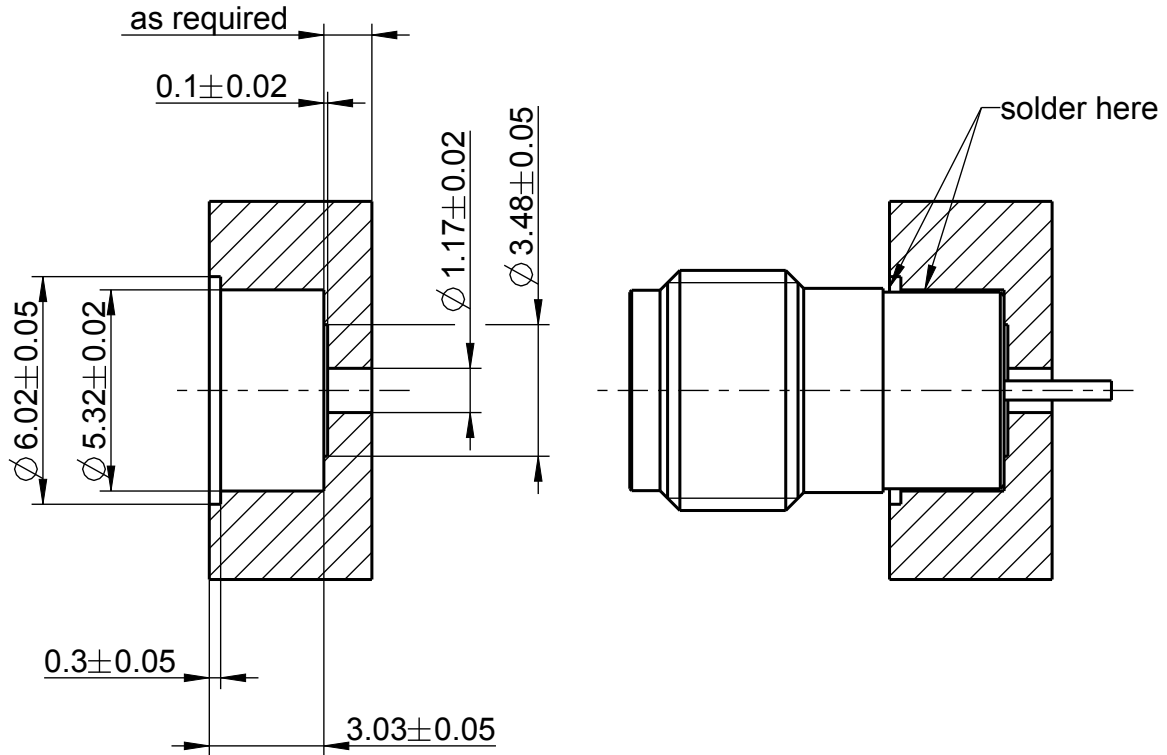
MA_32D2

Series: SMA

For connector 32K103-5H0

Panel preparation

Shroud protruding from mounting hole



Installation:

Solder connector into machined panel
 Maximum solder temperatur 350°C
 We recommend to use a preformed solder ring

*) For the crimping die part-nr. please consult the relevant customer drawing.

vertraulich / confidential

	date	name	scale:
drawn	16.03.2017	C_Schmidinge	5:1
check.	10.04.2017	E_Schwangler	sheet:
appr.	10.04.2017	E_Schwangler	1/2

Tools:

Soldering tool

Rosenberger

rev.	change-no	name	date
a00	17-0008	C_Schmidinge	10.04.2017
100	17-0445	C_Schmidinge	10.04.2017

1

2

3

4

Montageanleitung:

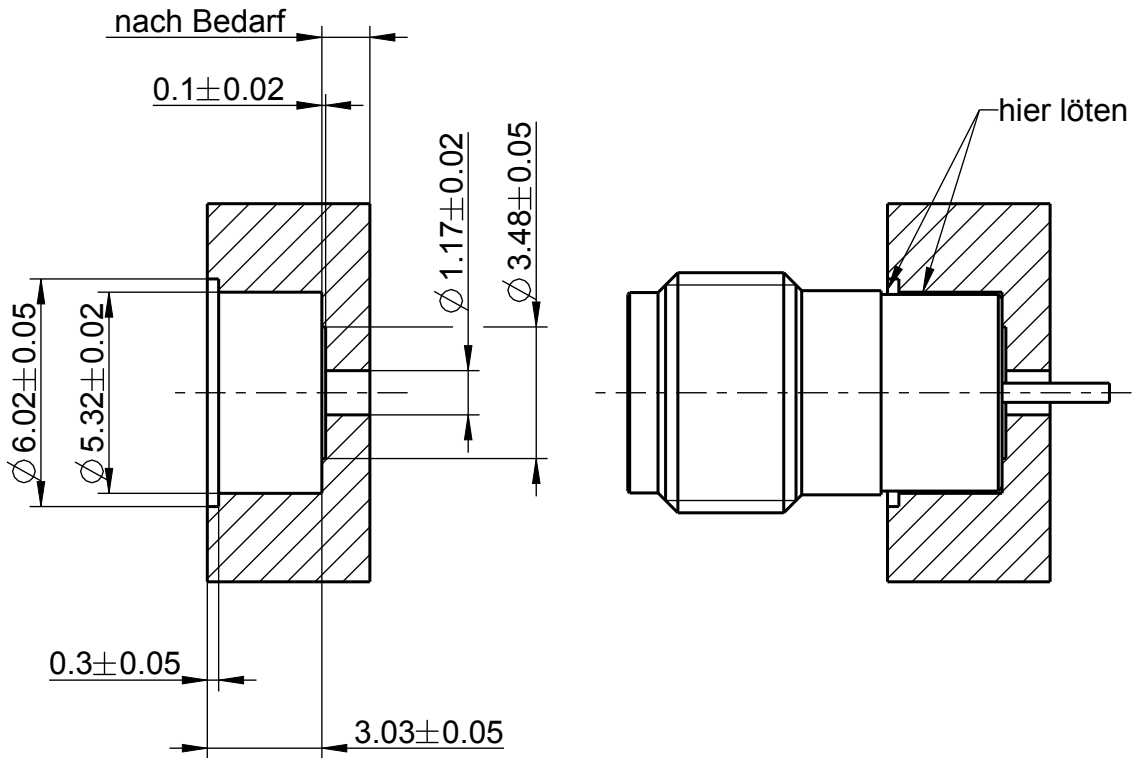
MA_32D2

Serie: SMA

Für Stecker 32K103-5H0

Montagebohrung

Außenleiter vorstehend zu Montagebohrung



Installation:

Stecker in vorbereitetes Gehäuse löten
 Maximale Löttemperatur 350°C
 Wir empfehlen ein Lötformteil zu verwenden

vertraulich / confidential

	date	name	scale:
drawn	16.03.2017	C_Schmidinge	5:1
check.	10.04.2017	E_Schwangler	sheet:
appr.	10.04.2017	E_Schwangler	2/2

Werkzeuge:

Lötwerkzeug
....
....
....
....
....

Rosenberger

rev.	change-no	name	date
a00	17-0008	C_Schmidinge	10.04.2017
100	17-0445	C_Schmidinge	10.04.2017

© ROSENBERGER HOCHFREQUENZTECHNIK GMBH & Co. KG
 The reproduction, distribution and utilization of this document as well as the communication of its contents to others without express authorization is prohibited. Offenders will be held liable for the payment of damages. All rights reserved in the event of the grant of patent, utility model or design.

PD_FB_01

-METRIC-



ISO-Projektion
 Methode 1