

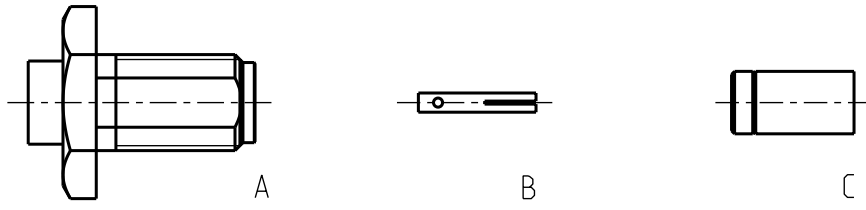
# Montageanleitung:

# 32 A26

# Serie: SMA

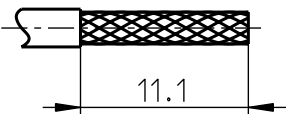
Verbinder gerade fuer flexible und Semi-Rigid-Kabel

Kabelbefestigung:  
Innenleiter und Aussenleiter geloetet



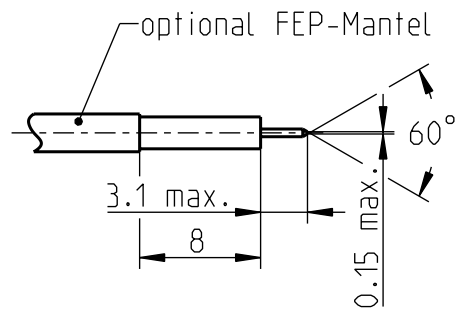
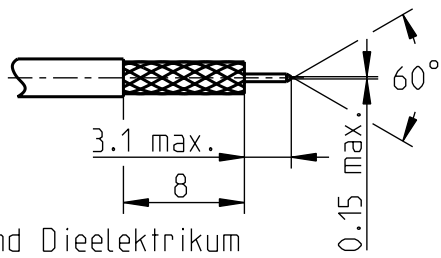
Fuer flexible Kabel:

- 1a) Kabel nach Zeichnung abisolieren.
- 1b) Schirm tauchverzinnen.

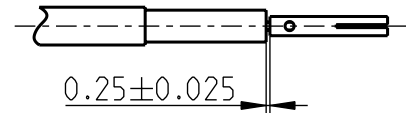


Fuer Semi-Rigid-Kabel:

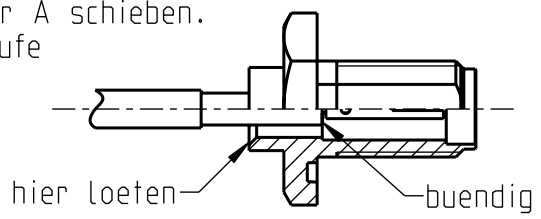
- 1c) Schirm und Dielektrikum nach Zeichnung entfernen und Innenleiter anfasen



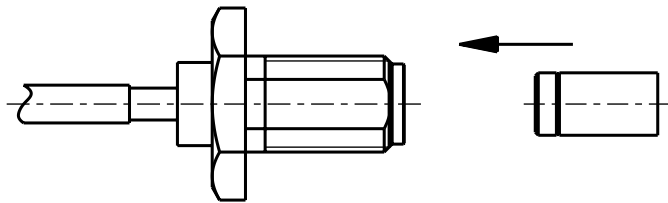
- 2) Innenleiter B auf das Kabel schieben und auf Distanz festloeten.



- 3) Das so vorbereitete Kabel in den Steckerkoerper A schieben. Der Kabelausenleiter muss buendig mit der Stufe im Steckeraussenleiter sein.
- 4) Den Steckeraussenleiter wie dargestellt mit dem Kabelausenleiter verloeten



- 5) Isolierteil C in den Steckerkoerper einpressen und AnschlussmaB kontrollieren.



rev.	change-no	name	date	drawn	date	name	scale:	Werkzeuge:	
				drawn	10.01.2006	J_Krautenbac	2:1	Abisolierwerkzeug	....
				check.	05.12.2014	E_Schwangler	sheet:	Loetausruestung	....
				appr.	05.12.2014	E_Schwangler	1/2	Distanzlehre	....
								....	....
								....	....
								....	....
								....	....
								....	....

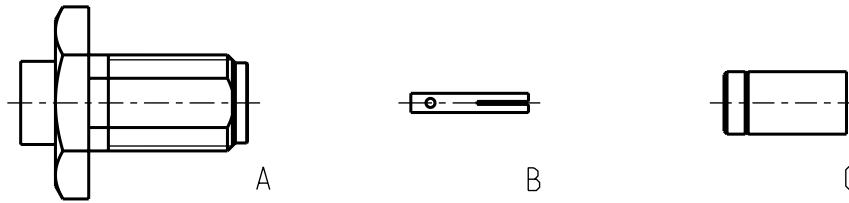
# Rosenberger

# Assembly Instruction: 32 A26

Series: SMA

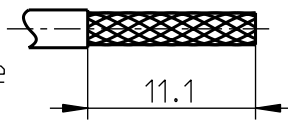
Straight connector for flexible and semi-rigid cables

Cable entry:  
Center conductor and  
Outer conductor soldered



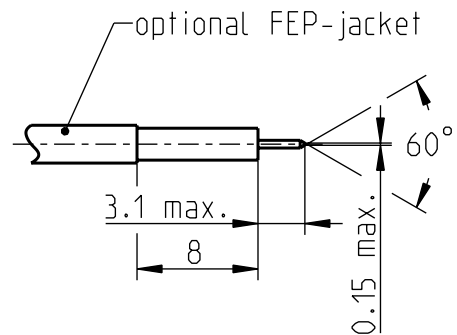
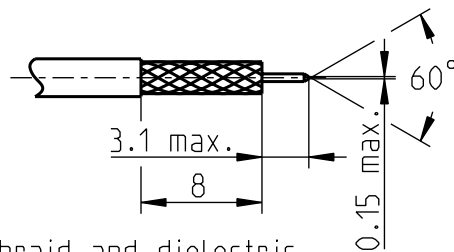
For flexible cables:

- 1a) Prepare the cable acc. to drawing.
- 1b) Tin-dip braid.

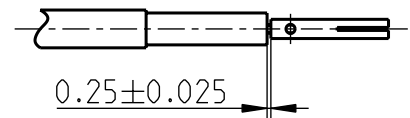


For semi-rigid cables:

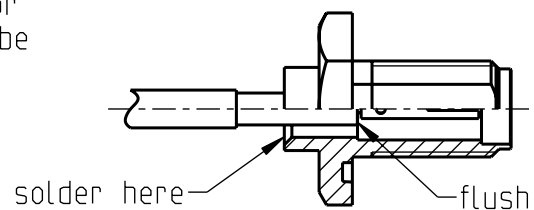
- 1c) Remove braid and dielectric as shown and chamfer center contact.



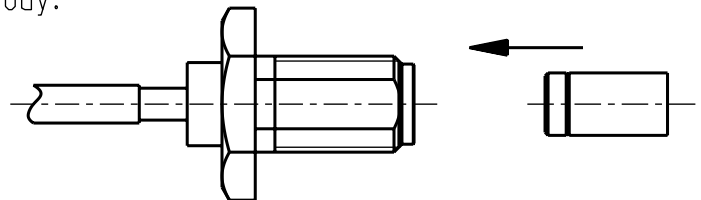
- 2) Push center pin B onto the cable inner conductor and solder maintaining the indicated space.



- 3) Insert the prepared cable into connector body A. Cable outer conductor has to be flush with step of connector body.
- 4) Solder connector body to cable outer conductor as shown.



- 5) Press insulator C into connector body. Check interface dimensions.



				date	name	scale:	Tools:		
				drawn	10.01.2006	J_Krautenbac	2:1	Stripping tool	....
				check.	05.12.2014	E_Schwangler	sheet:	Solder equipment	....
				appr.	05.12.2014	E_Schwangler	2/2	Solder gauge	....
								....	....
								....	....
								....	....
								....	....
								....	....
								....	....
								....	....

**Rosenberger**

rev.	change-no	name	date
b00	14-1793	A_Wallner	05.12.2014
a00	06-0018	S_Krautenbac	01.02.2006