

Installation Instruction

Rosenberger

for 7/8" annular corrugation cable

MA_1C7-CX5_U



60S1C7-CX5N1



60K1C7-CX5N1



53S1C7-CX5N1



53K1C7-CX5N1



64S1C7-CX5N1



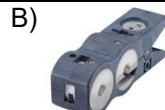
64K1C7-CX5B1



Connector components



A) SLZ0002-000



B) SLT001-C05



99W057-000



SLZ0009-000



- Cut your cable with tool of picture A)
- **Attention: Do NOT use a saw for cutting**
- Straighten the first 200mm of the cable.
- Get a clean smooth cut.



- 1) Insert the cable into the peeling tool on the UniPrep tool.



- 2) Peel off the sheath until you can see the end of the outer conductor protruding slightly



- 3) Clear the cable off any removed sheath residues.



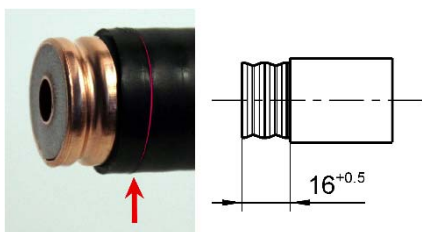
- 4) Do not apply any pressure; use the tool's spring force to apply the tool and rotate it all the way around the cable. Only turn the tool until you have cut through the outer conductor.



- 5) Hold the tool in the front and apply light pressure until the inner conductor is completely cut through. If this is the case, cut it around two to three times with pressure all around, in order to carry out the mantle cut, which is necessary for the correct plug installation.



- 6) Using the peel insert on the UniPrep tool, peel the cable sheath back to the previously formed sheath cut by turning it around the cable, and then remove any residues



- 7) Sheath cut
Sealing surface no nicks no deformed
Control the cut surface and check the dimension



- 8) Optional: Daub grease onto the O-Ring. Be careful with daub it's insanitary.



- 9) Slide back nut onto the cable until it is completely seated. Please loose sealing nut slightly (not complete) in order to easily install the back nut.

Installation Instruction

Rosenberger

for 7/8" annular corrugation cable

MA_1C7-CX5_U



10) Put clamp ring onto outer conductor



11) Expanding outer conductor on one point with a screwdriver



12) Start in expanded point and flare outer conductor with flaring tool by turning.



13) Proper shape after flaring operation.



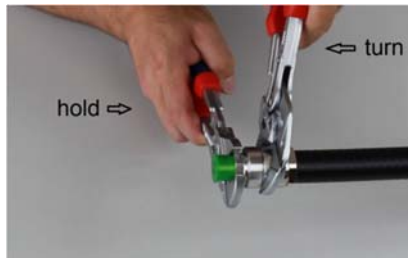
14) Clean interface from flakes with brush and alcohol.



15) Clean the inner conductor with alcohol, cleaning sticks and compressed air.



16) Put connector head by hand onto the cable and fix it with the back nut by hand.
Attention: Only turn the back nut, not the connector head.



17) Tighten connector head and back nut with wrenches until stop.
(Recommended torque: 40Nm)



18) Tighten sealing nut with wrenches
(Recommended torque: 18Nm)



19)



3D-Barcode for Video

Link for Video: <https://www.youtube.com/watch?v=yMMhysZPvB0>

Draft	Date	Approved	Date	Rev.	Engineering change number	Name	Date
Fl. Öllerer	20.06.2018	R. Fang	14.11.2018	b00	18-2094	Fl. Öllerer	14.11.2018
Rosenberger Hochfrequenztechnik GmbH & Co. KG P.O.Box 1260 D-84526 Tittmoning Germany www.rosenberger.de						Tel. : +49 8684 18-0 Email : info@rosenberger.de	
							Page 2 / 2