

Installation instruction

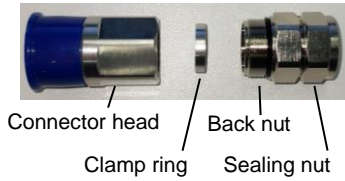
Rosenberger

for 1/2" annular corrugation cable

MA_1C7-C03_U



60S1C7-C03 | 60K1C7-C03 | 53S1C7-C03 | 53K1C7-C03 | 64S1C7-C03 | 64K1C7-C03 | 60S2C7-C03 | 64S2C7-C03 | 53S2C7-C03



SLZ0002-000



SLT001-C03



SLZ009-000
SLZ009-001
SLZ009-003



SLT004-000
SLT009-000
99W057-000
99W057-001
99W057-003



1) Cut the cable and straighten the first 200 mm.



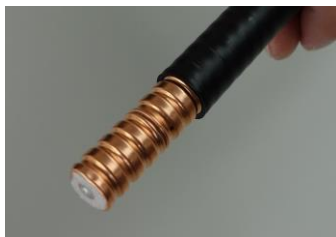
2) Insert the cable into the jacket stripping tool and remove about 20 mm of the cable jacket.



3) Insert the cable into the jacket cutter (annular nose in cable groove) and cut the jacket and the cable outer conductor.



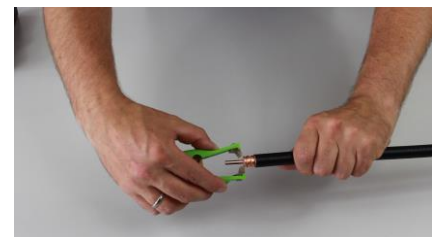
4) Remove the cable jacket until the mark done by the blade.



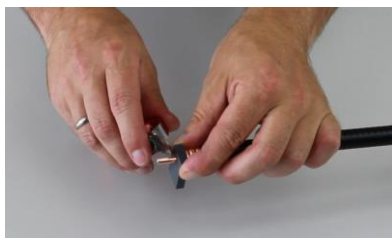
5) Control the cut surfaces.



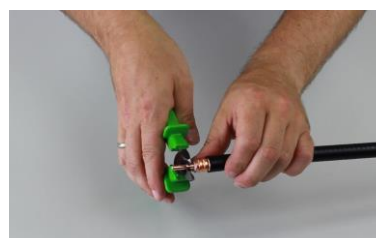
6) Remove the cable outer conductor and the dielectric.



7) If needed, clean the cable center conductor with the stripper. Avoid any damages or scratches on the center conductor.



8) Mark the center conductor by means of the gauge. See also dimensions at 12).



9) Cut the center conductor at the marked position.



10) Chamfer the center conductor of the cable with the stripping tool.

Dieses Dokument ist urheberrechtlich geschützt • This document is protected by copyright • Rosenberger Hochfrequenztechnik GmbH & Co. KG

RF_35/09.20/6.3

Rosenberger Hochfrequenztechnik GmbH & Co. KG
P.O.Box 1260 D-84526 Tittmoning Germany
www.rosenberger.com

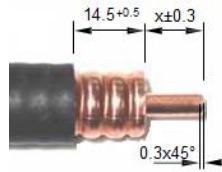
Tel. : +49 8684 18-0
Email : info@rosenberger.com

Page

1 / 2



11) Deburr the center conductor with a brush and control the roundness of the outer conductor.



12) Check the dimensions [mm]

Connector	x
64S1C7-C03	4
64K1C7-C03	4
Others	7



13) Slide the back nut onto the cable until it is completely seated. Please loose the sealing nut slightly to easily install the back nut.



14) Press the clamp ring on the outer conductor.



15) Expand the outer conductor on one point with a screwdriver. No cracks allowed.



16) Insert the center conductor into the flaring tool's hole marked with 1/2", start at the expanded point, then press and spin the tool to flare the outer conductor.



17) Proper shape after flaring. Please don't hurt the center conductor. Push the back nut until the clamp ring slides into the back nut.



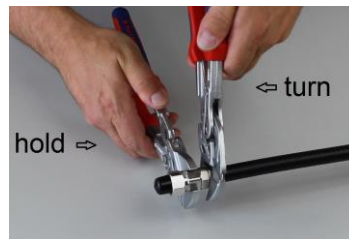
18) Clean the cable end with a brush, alcohol, and compressed air. Also ensure that there is no dirt inside the connector head.



19) Put the connector head onto the cable and fix it with the back nut by hand. Only turn the back nut, not the connector head.



20) Tighten the connector head and the back nut with wrenches until stop (recommended torque: 18 – 22 Nm).



21) Tighten the sealing nut with wrenches (recommended torque: 5 – 8 Nm).



Please also watch our training video: <https://www.youtube.com/watch?v=yMMhysZPvB0>



Dieses Dokument ist urheberrechtlich geschützt • This document is protected by copyright • Rosenberger Hochfrequenztechnik GmbH & Co. KG

RF_35/09.20/6.3

Draft	Date	Approved	Date	Rev.	Engineering change number	Name	Date
Christian Janßen	14.09.21	C_Janßen	15.09.21	e00	21-1759	J_Krautenbacher	15.09.21
Rosenberger Hochfrequenztechnik GmbH & Co. KG P.O.Box 1260 D-84526 Tittmoning Germany www.rosenberger.com						Tel. : +49 8684 18-0 Email : info@rosenberger.com	
							Page 2 / 2