

Overview Compatibility of the Multiport Mini-SMP Portfolio:

Frequency	Channels	Rosenberger No. ¹⁾	Match PCB connector
40 GHz	8	L99-CM192-XXX	MC18S108-40ML5
65 GHz	8	L99-CM193-XXX	
40 GHz	8	L99-CM277-XXX	MC18S109-40ML5
65 GHz	8	L99-CM423-XXX	
40 GHz	16	L99-CM118-XXX	MC18S116-40ML5
65 GHz	16	L99-CM003-XXX	

1) XXX: Please fill in the requested length standard: 300mm

The two 8-channel products are designed according to customer requirements, The dimensions and layouts of the two products are different. Please refer to the product specification for details

Assembling the PCB Connectors:

- Figure 1 shows the footprint for one connector of the Test PCB for solderless PCB connectors and 2 shows the PCB of a solderless PCB connector with the dowel pins. Please insert the big dowel pin into the big drill hole of the PCB and the small dowel pin into the small drill hole of the PCB. (Figure 3)

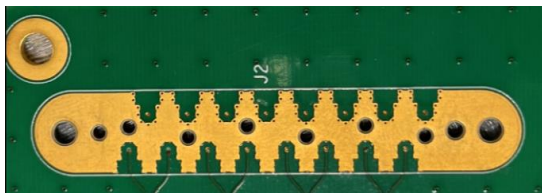


Figure 1 detail of PCB



Figure 2: PCB of solderless connector with dowel pins

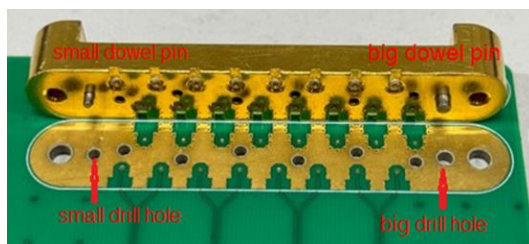


Figure 3 correct positioning



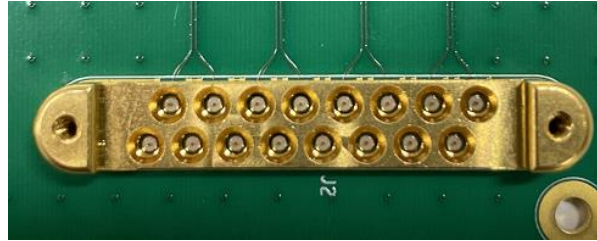
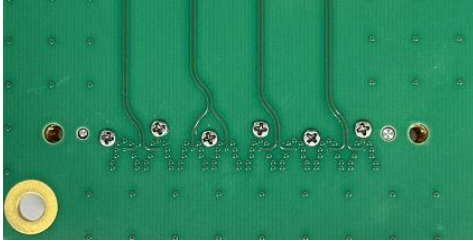
Figure 4 bad positioning



Figure 5 bad positioning

- Place the solderless PCB connector on the PCB and tighten the screws slightly to the threaded plate on the bottom side of the PCB with the enclosed screws.

Tighten the screws with a torque of 0.16 Nm.
Please note that it is possible to deviate from this recommendation depending on the PCB material.

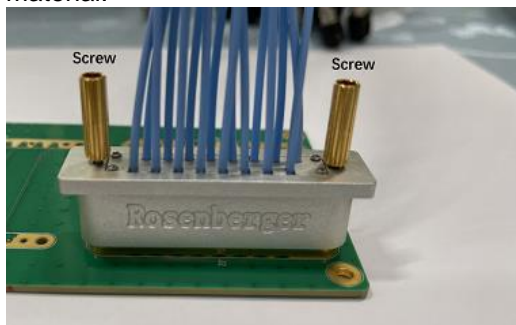


Connecting the Assembly to the PCB Connector:

- 1) Cable assembly is vertically docked with the PCB connector , cable assembly can 180° twistable .
- 2) Use screwdriver to screw both sides of the 2pcs screw, screw into place to ensure reliable connection

Tighten the screws with a torque of 0.04 Nm.

Please note that it is possible to deviate from this recommendation depending on the PCB material.

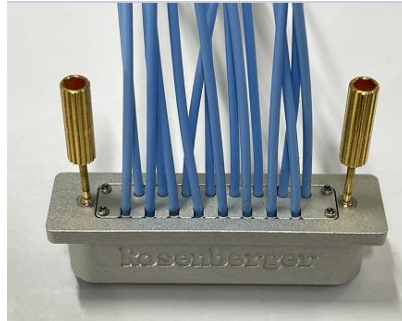


Disconnecting the Assembly to the PCB Connector:

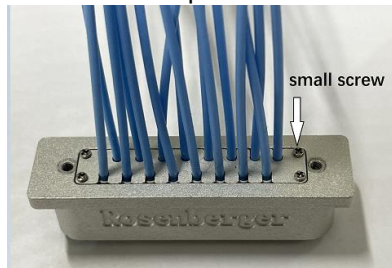
- 1) Use a screwdriver to unscrew the 2pcs screw.
- 2) Hold the housing in hand and pull out the cable assembly vertically

Disassembling Cable assemblies from the Multiport Assembly:

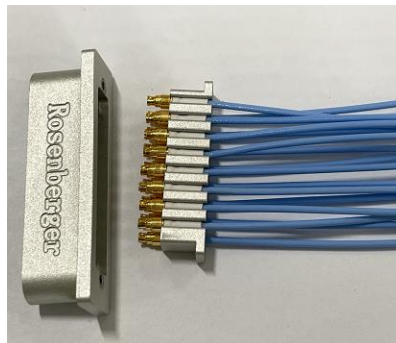
1) Use a screwdriver to remove the side 2pcs screws



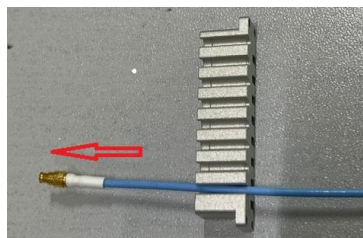
2) Use a screwdriver to remove the 4pcs small screws



3) Take apart the two metal plastic shells.



4) Pull out the connector and sleeve along the direction of the arrow, make sure the blue cable is in the slot, take it out of the slot, finish disassembling Cable assemblies



Handling Instruction

Rosenberger

For Multiport Mini-SMP Portfolio

HI_033

Assembling Cable assemblies to the Multiport Assembly:

Reference disassembling Cable assemblies from the Multiport Assembly

Reference disassembling Cable assemblies from the Multiport Assembly, remove cables that need to be replaced, and assembly new cable in housing , follow the above steps to install the entire cable assembly.

While the information has been carefully compiled to the best of our knowledge, nothing is intended as representation or warranty on our part and no statement herein shall be construed as recommendation to infringe existing patents. In the effort to improve our products, we reserve the right to make changes judged to be necessary.

Draft	Date	Approved	Date	Rev.	Engineering change number	Name	Date
Liufei	27.01.27	Liujinghong	27.01.27	a00	21-s001	Liufei	27.01.27

Rosenberger Hochfrequenztechnik GmbH & Co. KG P.O.Box 1260 D-84526 Tittmoning Germany www.rosenberger.de	Tel. : +49 8684 18-0 Email : info@rosenberger.de	Page 4 / 4
--	--	---------------