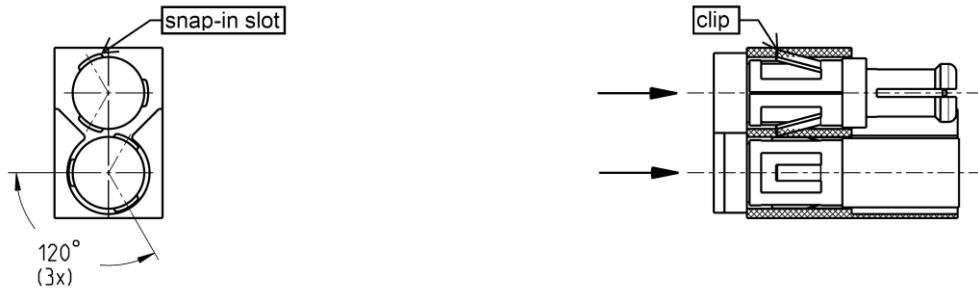
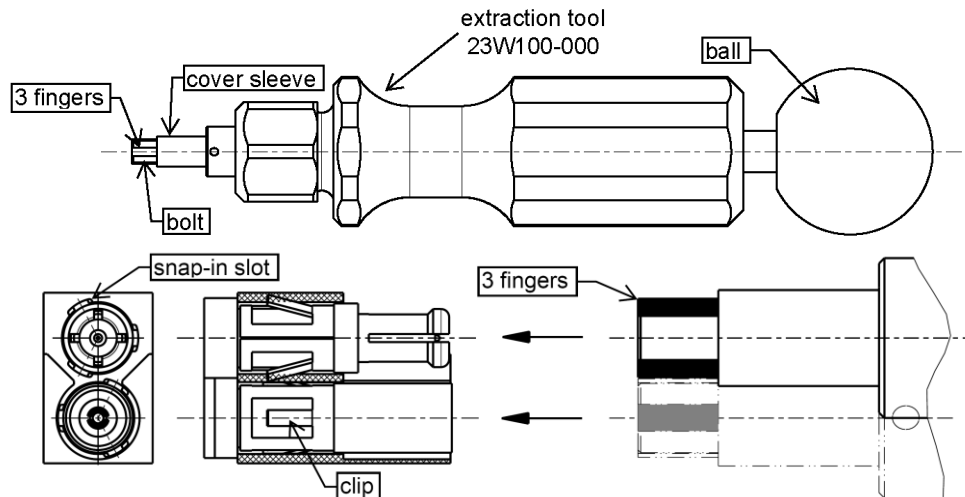


Assembly:



Push the connector into the housing in such a way that the clip engages noticeably into the snap-in slot

Disassembly:



Insert the extraction tool (23W100-000) till it pushes up the housing (the cover sleeve and the bolt with the ball are pushed back simultaneously)

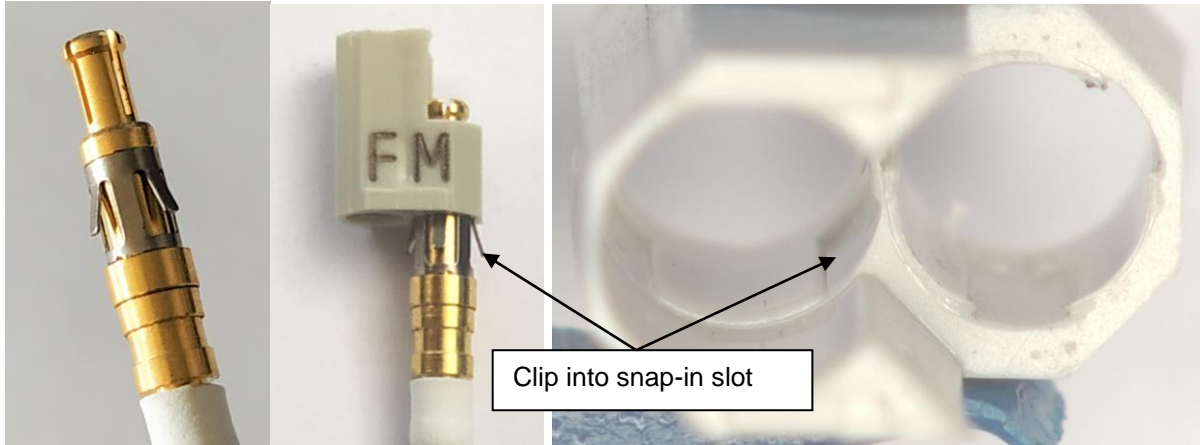
Be certain that the fingers of the tool meet the snap-in slots of the housing and back-press the clips of the connectors.

With your hand on the ball, push the bolt with light force forward, the connector will gently slide out of the housing.

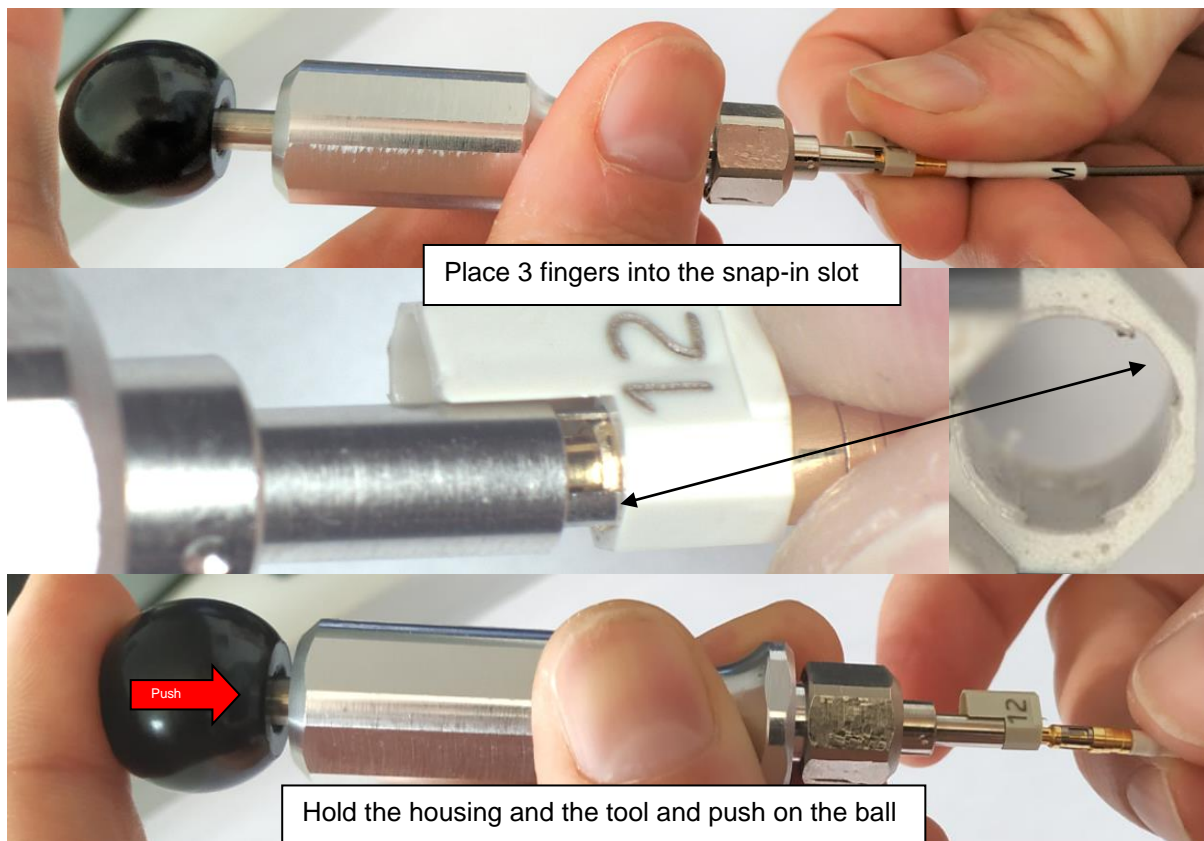
Caution:

Never use the tool with too much force. The tool must not be twisted during use. If the tool is used incorrectly, the fingers will bend irreparably or break. A broken extraction sleeve can be exchanged (replacement sleeve 23W100-001)

Assembly:



Disassembly:



While the information has been carefully compiled to the best of our knowledge, nothing is intended as representation or warranty on our part and no statement herein shall be construed as recommendation to infringe existing patents. In the effort to improve our products, we reserve the right to make changes judged to be necessary.

Draft	Date	Approved	Date	Rev.	Engineering change number	Name	Date
G. Schiele	19.03.09	F. Reiner	16.01.20	c01	19-2413	S. Schmid	15.01.20

Rosenberger Hochfrequenztechnik GmbH & Co. KG P.O.Box 1260 D-84526 Tittmoning Germany www.rosenberger.de	Tel. : +49 8684 18-0 Email : info@rosenberger.de	Page 2 / 2
--	--	---------------